

2017-2 대전시립교향악단 튜바 상임 오디션 곡목

- 2차 실시심사 지정곡 -

Tuba Tutti

Part	List
Tuba Tutti (튜바 상임)	1. R. Vaughan Williams Tuba Concerto (All movements including Cadenza) 본 윌리엄스 튜바 협주곡 전 악장(카덴차 포함 전 악장)
	2. Orchestra Repertoire
	Wagner Prelude to Die Meistersinger von Nurnberg beginning ~ [A] / [J] ~ end
	Die Walkure
	Berlioz Hungarian March [4] ~ [5] after 5
	Fantastic Symphony 4 th mvt. [55] before 6 ~ end 5 th mvt. [62] after 12 ~ [63] [68] ~ end
	Prokofiev Symphony No. 5 1 st mvt. [3] ~ [5] after 7
	Shostakovich Symphony No. 5 1 st mvt. [29] after 4 ~ [35] 3 rd mvt. [38] ~ [39]
	Strauss Ein Heldenleben [8] after 1 ~ [12] [62] ~ [66] [71] before 2 ~ [76] [109] ~ end
	Till Eulenspiegel [13] ~ [14] [36] after 4 ~ [38]
	Mahler Symphony No.1 3 rd mvt. [2] after 7 ~ [4]
	Tchaikovsky Swan Lake

- ※ 1. 2차 실기심사는 1차 DVD 심사 합격자에 한함.(1차 발표일 11월 14일)
 2. 반주자 대동.
 3. 해당 파트 종료 후 심사위원의 요청에 의해 실기 2차 다시 들을 수 있음.
 4. 2차 실기심사 해당 파트별 응시순서 추첨 시간은 1차 심사 발표 후 11. 16(목) 홈페이지에
 공고됨.(추첨에 불참한 응시자는 오디션에 응시할 수 없음, 대리 추첨 불허)

Vorspiel

zur Oper
Die Meistersinger von Nürnberg

TUBA

Richard Wagner

Schr gehalten
(*Molto tenuto*)

8

19

24

5 Jaber sehr markiert
(*ma molto marcato*)

mf

36

allmählich immer stärker
(*poco a poco più di forza*)

72

tr

K

sehr gebunden
(*molto legato*)

f

78

f

piuf

88

e piuf

ff

88

L

3

f

immer ff
(*sempre ff*)

97

piuf

103

ff

1

110

N

ff

116

1

Fine.

DER RITT DER WALKÜREN

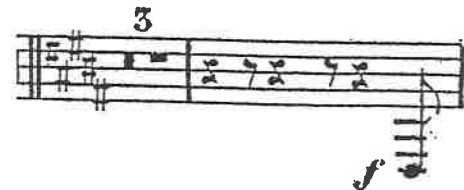
aus dem Musik - Drama

DIE WALKÜRE

von

RICHARD WAGNER.

CONTRABASS TUBA.



Ungarischer Marsch (Rakoczy-Marsch)

für Orchester

Tuba

Hector Berlioz, aus op. 24

Allegro marcato ($\text{♩} = \text{ss}$)

6 7 Trgl. 9 **1** 14 10 10 **2** 9 4 4

75 **3** 14 * Tromboni Trombe **4** *ff*

96 *ff*

102 *ff*

109 **5** **3**

Phantastische Symphonie.

IV.

H. Berlioz, Op. 14.

mf *cresc.* *f* *ff* *f* *ff*

dim. *p* *pp* *ff* *ff*

f *ff* *ff*

f *ff*

rall. poco *a tempo*

ff *f* *ff*

V.

Allegro assai. (♩ = 67) *ff*

Allegro. (♩ = 104) *ff*

68 *f*

14 69 15 16 17 70 *f cresc. ff*

Hexenrundtanz.
Ronde du Sabbat.
Witches' round dance.
Poco meno mosso. 5

5 71 5 *ff*

5 72 14 73 13 *ff*

74 6 3 3 *ff*

3 75 9 76 16 77 16 *ff*

Tuba I.

Musical score for Tuba I, measures 78-86. The score is written in bass clef with a key signature of one flat (B-flat). Measure numbers 78, 79, 80, 81, 82, 83, 84, 85, and 86 are boxed. Measure counts (16, 16, 3, 7, 8, 20, 4, 1, 3, 1) are placed above the staves. Dynamics include *ff*, *f*, *cresc. molto*, and *poco animato*. Performance markings include *Viol. pic.* and *Fl. pic.* with corresponding notes. The score concludes with a double bar line and a fermata.

Symphony No.5

S. Prokofiev

I.

Andante

Tuba

ff mp

mp mf

f mf f

mf mp

f mf dim. p

3

4

5

Symphony N° 5

D. Shostakovich

op. 47

I

Handwritten musical notation for the first system of section I. It features a treble clef staff with notes and rests. A circled number 30 is above the staff with an upward-pointing arrow. To the right, circled numbers 31, 32, 33, 34, 35, and 36 are placed above the staff. The word "pocostring" is written below the staff.

Handwritten musical notation for the second system of section I. It features a bass clef staff. A circled number 32 is above the staff with a downward-pointing arrow. To the right, circled numbers 33 and 34 are above the staff. The word "esbau" is written above the staff.

Handwritten musical notation for the third system of section I. It features a bass clef staff. A circled number 34 is above the staff. To the right, circled numbers 35 and 36 are above the staff.

III

Handwritten musical notation for the first system of section III. It features a treble clef staff with notes and rests. A circled number 38 is above the staff.

Handwritten musical notation for the second system of section III. It features a bass clef staff. Above the staff, the text "molto rit. tem." and "a tempo con tutta forza" is written. A circled number 39 is above the staff. The word "dim" is written at the end of the staff. Below the staff, the word "rall" is written, followed by dynamic markings "p", "dim", and "pp".

Ein Heldenleben.

Richard Strauss, Op. 40
Edited by Clinton F. Nieweg
and Stuart Serio

8

mf cresc.

10 6 11 4

ff

62 1 2 63 4

ff

64

ff

65 mit Dämpfer

ff

66

(mit Dämpfer) 71

ff

72 mit Steigerung

73

74

sfz < fff

75 Dämpfer weg. 9 76

dim.

Basstuba.

109 6



1. Horn.

Festes Zeitmass. (mässig langsam.) *molto dim.*

cresc.

pp

mf

cresc.

ff *dim.* *p*

Till Eulenspiegels lustige Streiche.

Richard Strauss, Op. 28
Edited by Clinton F. Nieweg

13 *espr.* *mf* 2 *p* 3 *ruhig* 14

36 *ff*

f 3 *f cresc.* *ff*

immer ausgelassener und lebhafter 1 37 3 *ff* *ff*

ff 1

2 3 4 5 6 *fff*

SYMPHONIE N° 1

Gustav Mahler

III

The image shows two staves of musical notation in bass clef. The top staff begins with a dynamic marking of *pp* and an accent mark (^) over the first note. It contains a series of eighth notes with slurs, followed by a triplet of eighth notes marked with a '3'. The bottom staff contains a sequence of notes with slurs and is annotated with fingerings: '1', '2', '3', '4', and a final '4' at the end of the line.

Swan Lake

Tuba

P. I. Tchaikovsky

19 **Allegro agitato** 20 **2** 9

Tuba

Ob. solo 20 TROM. III *ff*

21 10 22 7

ff *ff*

poco rit. *Ritenuito* TIMP.

23 **Alla breve. Moderato e maestoso.**

fff