

## 2017 대전시립교향악단 튜바 상임 오디션 곡목

### Tuba Tutti

Part	List		
<b>Tuba Tutti</b>  (튜바 상임)	<b>1. R. Vaughan Williams Tuba Concerto (All movements including Cadenza)</b>		
	본 윌리엄스 튜바 협주곡 전 악장, 카덴차 포함		
	<b>2. Orchestra Repertoire</b>		
	Wagner	Prelude to Die Meistersinger von Nurnberg	beginning ~ [A] / [J] ~ end
		Die Walkure	
	Berlioz	Hungarian March	[4] ~ [5] after 5
		Fantastic Symphony	4 <sup>th</sup> mvt. [55] before 6 ~ end
			5 <sup>th</sup> mvt. [62] after 12 ~ [63]
			[68] ~ end
	Prokofiev	Symphony No. 5	1 <sup>st</sup> mvt. [3] ~ [5] after 7
	Shostakovich	Symphony No. 5	1 <sup>st</sup> mvt. [29] after 4 ~ [35]
			3 <sup>rd</sup> mvt. [38] ~ [39]
	Strauss	Ein Heldenleben	[8] after 1 ~ [12]
		[62] ~ [66]	
		[71] before 2 ~ [76]	
		[109] ~ end	
	Till Eulenspiegel	[13] ~ [14]	
		[36] after 4 ~ [38]	
Mahler	Symphony No.1	3 <sup>rd</sup> mvt. [2] after 7 ~ [4]	
Tchaikovsky	Swan Lake		

※ 1. 반주자 대동.

2. 해당 파트 종료 후 심사위원의 요청에 의해 2차 다시 들을 수 있음.

3. 해당 파트별 응시순서 추첨 시간은 원서접수 마감 후 3. 16(목) 홈페이지에 공고됨.

(추첨에 불참한 응시자는 오디션에 응시할 수 없음, 대리 추첨 불허)

# Vorspiel

zur Oper  
Die Meistersinger von Nürnberg

TUBA

Richard Wagner

Schr gehalten  
(*Molto tenuto*)

1  
8  
19  
24

*f*

5

*f*

A

5 Jaber sehr markiert  
(*ma molto marcato*)

25  
31

*mf*

allmählich immer stärker  
(*poco a poco più di forza*)

36  
41

*f*

**K**  
sehr gebunden  
(*molto legato*)

42  
57

*f*

tr

58  
67

*f*

*piuf*

68  
77

*f*

*e piu f*

78  
87

*f*

*ff*

88  
96

*f*

*immer ff (sempre ff)*

97  
106

*ff*

*piuf*

107  
115

*ff*

*ff*

116  
125

*ff*

*Fine.*

# DER RITT DER WALKÜREN

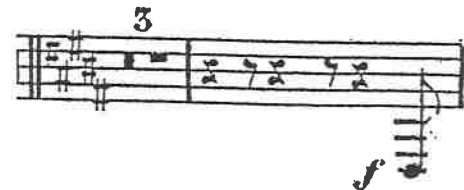
aus dem Musik - Drama

## DIE WALKÜRE

von

RICHARD WAGNER.

CONTRABASS TUBA.



# Ungarischer Marsch (Rakoczy-Marsch)

für Orchester

Tuba

Hector Berlioz, aus op. 24

Allegro marcato (♩ = ss)

The musical score for the Tuba part is written in bass clef with a key signature of one sharp (F#). The tempo is marked 'Allegro marcato' with a quarter note equal to a second (♩ = ss). The score consists of five staves of music, with measure numbers 6, 7, 9, 14, 10, 10, 9, 4, 4, 3, 14, 96, 102, and 109 indicated. The first staff includes a trill (Trgl.) and a first ending bracket (1). The second staff is marked with a third ending bracket (3), a 14-measure rest, and the instruction '\* Tromboni'. The third staff is marked with a fourth ending bracket (4) and 'ff'. The fourth staff is marked with 'ff'. The fifth staff is marked with a fifth ending bracket (5) and a 3-measure rest.

# Phantastische Symphonie.

## IV.

H. Berlioz, Op. 14.



55

mf *cresc.* *f* *ff* *f* *ff*

5

*ff* *ff*

57

*dim.* *p* *pp* *ff* *ff*

3

2 2 3 58 2

*f* *ff* *ff*

4 4 59 4

*f* *ff*

*rall. poco* *a tempo*

*ff* *f* *ff*

# V.

Allegro assai. (♩ = 67) *ff*

Allegro. (♩ = 104) *ff*

21 63 64 4

68 *f*

14 69 15 16 17 70 *f cresc.* *ff*

Hexenrundtanz.  
Ronde du Sabbat.  
Witches' round dance.  
Poco meno mosso. 5

5 71 *ff* 5

5 72 *ff* 14 73 13

74 *ff* 6 3 3

75 *f* *p* *ff* *p* 9 76 16 77 16

Trumpet I.

Musical score for Trumpet I, measures 78-86. The score is written in bass clef with a key signature of one flat (B-flat). Measure numbers 78, 79, 80, 81, 82, 83, 84, 85, and 86 are boxed. Measure counts (16, 16, 7, 8, 20, 4, 1) are placed above the measures. Performance markings include *ff*, *f*, *cresc. molto*, *poco animato*, and *Viol. pic.*. The score includes various rhythmic patterns, including eighth and sixteenth notes, and rests. A *Viol. pic.* marking appears above measures 80-83. A *Fl. pic.* marking appears above measures 21-23. The score concludes with a double bar line and a fermata.

# Symphony No.5

S. Prokofiev

I.

Andante

Tuba

ff mp

mp mf

f mf f

mf mp

f mf dim. p

1 2 3 4 5



Symphony n° 5

D. Shostakovich

op. 47

I

Handwritten musical notation for measures 29-31. Measure 30 is circled and has a handwritten '205' above it. Measure 31 is circled. The word 'pocostring' is written below the staff.

Handwritten musical notation for measures 32-33. Measure 32 is circled and has a handwritten '138' below it. Measure 33 is circled and has a handwritten 'esbau' above it.

Handwritten musical notation for measures 34-35. Measure 34 is circled. Measure 35 is circled and has a handwritten '1' below it.

III

Handwritten musical notation for measure 38, circled. It includes a dynamic marking of **ff**.

Handwritten musical notation for measures 39-40. Measure 39 is circled. Above the staff, the tempo marking 'a tempo con tutta forza' is written. Below the staff, there are dynamic markings: **p**, **dim**, and **pp**.

# Ein Heldenleben.

Richard Strauss, Op. 40  
Edited by Clinton F. Nieweg  
and Stuart Serio

8  
*f*

9 7  
*mf cresc.*

10 6 11 4  
*ff*

62 1 2  
*ff*

63 4  
*ff*

64  
*ff*

65 mit Dämpfer  
*ff*

66

(mit Dämpfer) 71  
*ff*

mit Steigerung 72  
*ff*

73

74  
*sfz* *fff*

75 Dämpfer weg. 9 76  
*dim.*

# Basstuba.

109 6



1. Horn.

Festes Zeitmass. (mässig langsam.) *molto dim.*

*cresc.*

*pp*

*mf*

*cresc.*

*ff* *dim.* *p*

# Till Eulenspiegels lustige Streiche.

Richard Strauss, Op. 28  
Edited by Clinton F. Nieweg

13 *espr.* 2 3 *ruhig* 14

36

3 *f* *f cresc.* *ff*

*immer ausgelassener und lebhafter* 1 37 3 *ff* *ff*

*ff* 1

2 3 4 5 6 *fff*

# SYMPHONIE N° 1

Gustav Mahler

## III

The image shows two staves of musical notation in bass clef with a key signature of one flat (B-flat). The top staff begins with a dynamic marking of *pp* and a hairpin crescendo. It contains a series of eighth notes with slurs, followed by a triplet of eighth notes. The bottom staff contains a sequence of eighth notes with slurs, with fingerings 1, 2, 3, 4, and 4 indicated above the notes.

# Swan Lake

Tuba

P. I. Tchaikovsky

19 **Allegro agitato** 20

Tuba

Ob. solo 20 TROM. III 9 *ff*

21 10 22 7

*ff* *ff*

*poco rit.* *Ritenuito* TIMP.

23 **Alla breve. Moderato e maestoso.**

*fff*